



Cross-African collaboration against current and emerging health challenges



Initiative to
Develop
African
Research
Leaders

BRIEF DESCRIPTION

IDeAL, the Initiative to Develop African Research Leaders, was established in 2008 as a research training platform at KEMRI-Wellcome with funding from the Wellcome Trust; it was subsequently designated IDeAL in 2015 with further funding from Wellcome and UKAID. Since then, IDeAL has acquired a broader national and regional focus culminating in the formation of a formal consortium that includes KEMRI-Wellcome, Pwani and Strathmore universities in Kenya, Center for Infectious Disease, Zambia, Epicentre in Niger, University of Oxford and Glasgow, UK.

The consortium constitutes the 2nd Phase of IDeAL, which is planned to run until 2027

IDeAL aim is to develop sustainable health research capacity by establishing a critical mass of local research leaders across all domains of health research, including laboratory sciences, epidemiology, clinical research, social sciences, health systems, and implementation research. The Initiative employs a comprehensive framework for attracting recent graduates to health research through a graduate research internship scheme, offering high-quality

Masters and PhD training, and retaining those trained in Kenya, the region, or research that is relevant to Africa. IDeAL ensures quality through financial support, operational assistance, a vibrant training environment, technical and leadership development, and post-training support. This framework is underpinned by core values that include diversity, inclusivity, equity and long-term horizon.

IDeAL's standards are well-recognized, with several universities delegating many responsibilities related to recruiting, training, and tracking the progress of students to IDeAL's secretariat. Since 2008, the initiative has trained over 800 Fellows, with more than 90% of them completing their training within the stipulated time.

Furthermore, many of them have gone on to lead their research groups and contribute to health knowledge, policy, and practice both in Africa and globally. Some have received local and international recognition and are playing leadership roles in key health areas, such as universal health coverage, malaria vaccine development, and COVID-19 pandemic response.





OUR SCHEMES

School Leavers' Attachment Scheme (SLAS): We offer 3 months of quality career guidance and mentorship targeting Kilifi's top students who have just completed their high school studies.

Undergraduate Attachment: Attachments are offered to students in their third or fourth year as part of their university training. This programme provides a platform for students to interact with infrastructure, researchers, and scientists under quality supervision.

Postgraduate Diploma (PGD): This learning program, offered jointly by KEMRI-Wellcome Trust Research Programme and Pwani University, equips graduates with theoretical and practical knowledge of the philosophy

and practice of research.

Master's Programme: We offer a high-quality master's program in Immunology in collaboration with Pwani University. This program provides a first-class foundation for further research in collaboration with project leads and universities.

PhD Programme: We offer a 4-year training program offered in collaboration with leading local and international universities. It provides high-quality supervision and advisory.

Postdoc Programme: This is a defined career path, beginning with early postdocs and continuing through mid- and senior research fellows to principal research Fellows.

TRAINING IMPACT IN NUMBER AS AT DECEMBER 2024

60+

Postdoctoral training

135+

PhD completed

250+

Masters' Studentships

296+

Postgraduate internships

300+

Undergraduate and school graduates' attachments

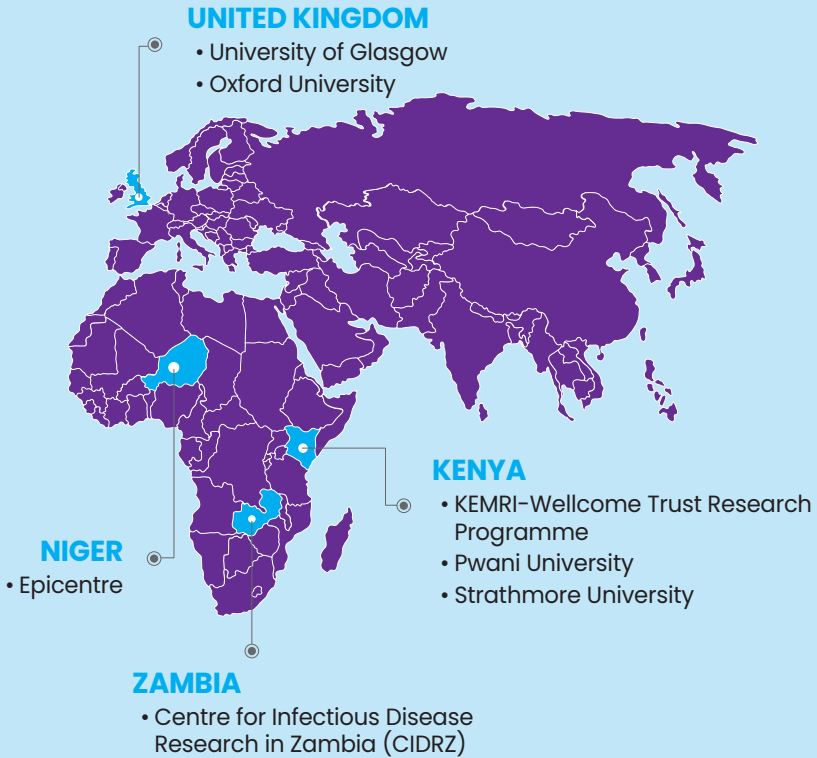
17+

Progress to Associate or full professors

15+

Heads of institutions/department

OUR FOOTPRINT



OUR PARTNERS

KEMRI | Wellcome Trust



The Initiative to Develop African Research Leaders (IDeAL)

Hospital Road, P.O. Box 230, Kilifi

Email: ideal_info@kemri-wellcome.org

Phone: +254 709 983000

| @IDeAL_KEMRI_WT